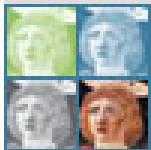


**“e-Infrastructures for Cultural Heritage”,
DC-Net Conference, Brussels, 29 October 2010**

Opening and Enhancing the Use of the Archives of European Cultural Heritage Institutions



Ina Vanden Berghe
KIK-IRPA, BE



CHARISMA

Cultural Heritage Advanced Research Infrastructures
Synergy for a Multidisciplinary Approach to Conservation/Restoration

“e-Infrastructures for Cultural Heritage”, DC-Net Conference, Brussels, 29 October 2010

Opening and Enhancing the Use of the Archives of European Cultural Heritage Institutions

Outline

CHARISMA project

Introduction Charisma / Eu-Artech / Labstech

Partners

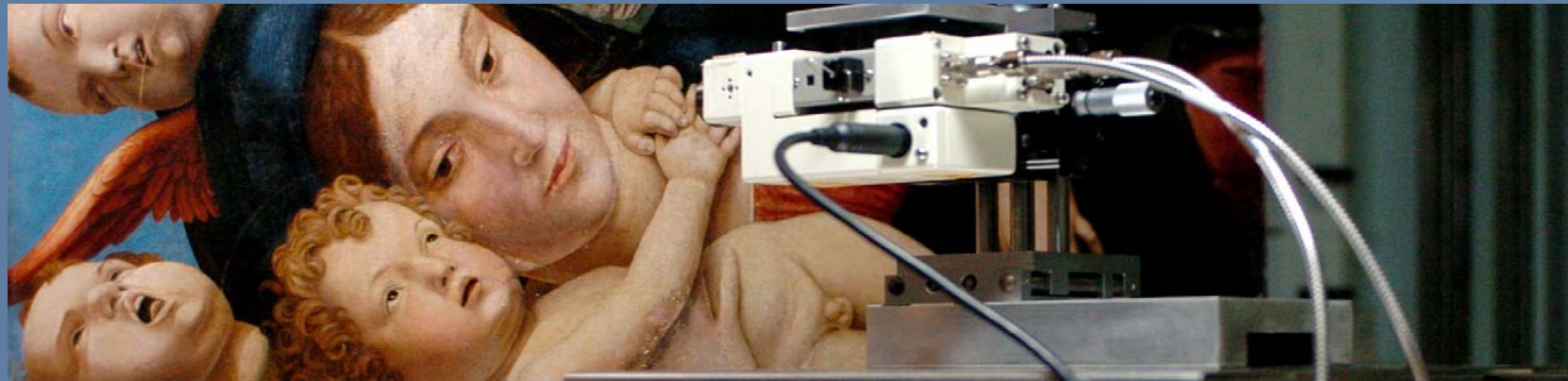
Objectives

Structure

Transnational access activities

Joint research activities

Conclusion / Challenges



Charisma project

*Cultural Heritage Advanced
Research Infrastructures:
Synergy for a Multidisciplinary
Approach to Conservation*

<http://www.charismaproject.eu/>



Project co-funded by the EC within the action 'Research Infrastructures' of the 'Capacities' Programme GA No. FP7- 228330



Charisma project

History

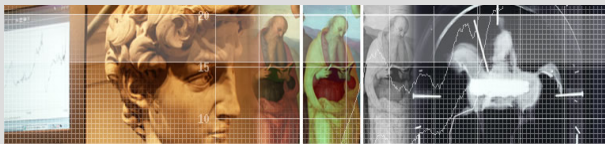
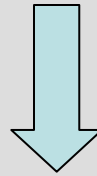


LabS TECH



*Laboratories on Science and Technology for the
Conservation of the European Cultural Heritage*

FP5-Improving Human Potential: 6 partners. Duration: 3 years.



Eu-ARTECH

*Access, Research and Technology for the
conservation of the European Cultural Heritage*

FP6-Integrated Infrastructure Initiative: 12 partners. Duration: 5 years [June 2004- May 2009]

Partners

1-University of Perugia, coordinator	IT
2-CNRS Centre de Recherche et de Restauration de Musées de France	FR
3-Foundation for Research and Technology – Hellas, Crete	GR
4-The National Gallery of London	UK
5-Synchrotron SOLEIL	FR
6-Consiglio Nazionale delle Ricerche, ICVBC/ INOA / IFAC	IT
7-University of Torun	PL
8-University of Aachen, RWTH	DE
9-ATOMKI-HAS, Debrecen	HU
10-Laboratoire de Recherche des Monuments Historiques, LRMH	FR
11-The British Museum	UK
12-Doerner Institute, Munchen	DE
13-Ormylia Art Diagnosis Centre	GR
14-Opificio delle Pietre Dure	IT
15-Museo Nacional del Prado	ES
16-Instituut Collectie Nederland	NL
17- <i>Institut Royal du Patrimoine Artistique, KIK-IRPA</i>	BE
18-Agency for the Promotion of European Research	IT
19-Laboratorio Nacional de Engenharia Civil	PT
20-RISSPO-HAS, Budapest	HU
21-University of Bologna	IT



Charisma project

Objectives

- Free access to the most advanced **scientific facilities and competences**, allowing scientists, conservators-restorers and curators to enhance their research at the field forefront.

Access Facilities

- Development of research on new methodologies and innovative equipment dedicated to improve the services to researchers
(*innovations beyond the state of the art..*)

Joint Research Activities

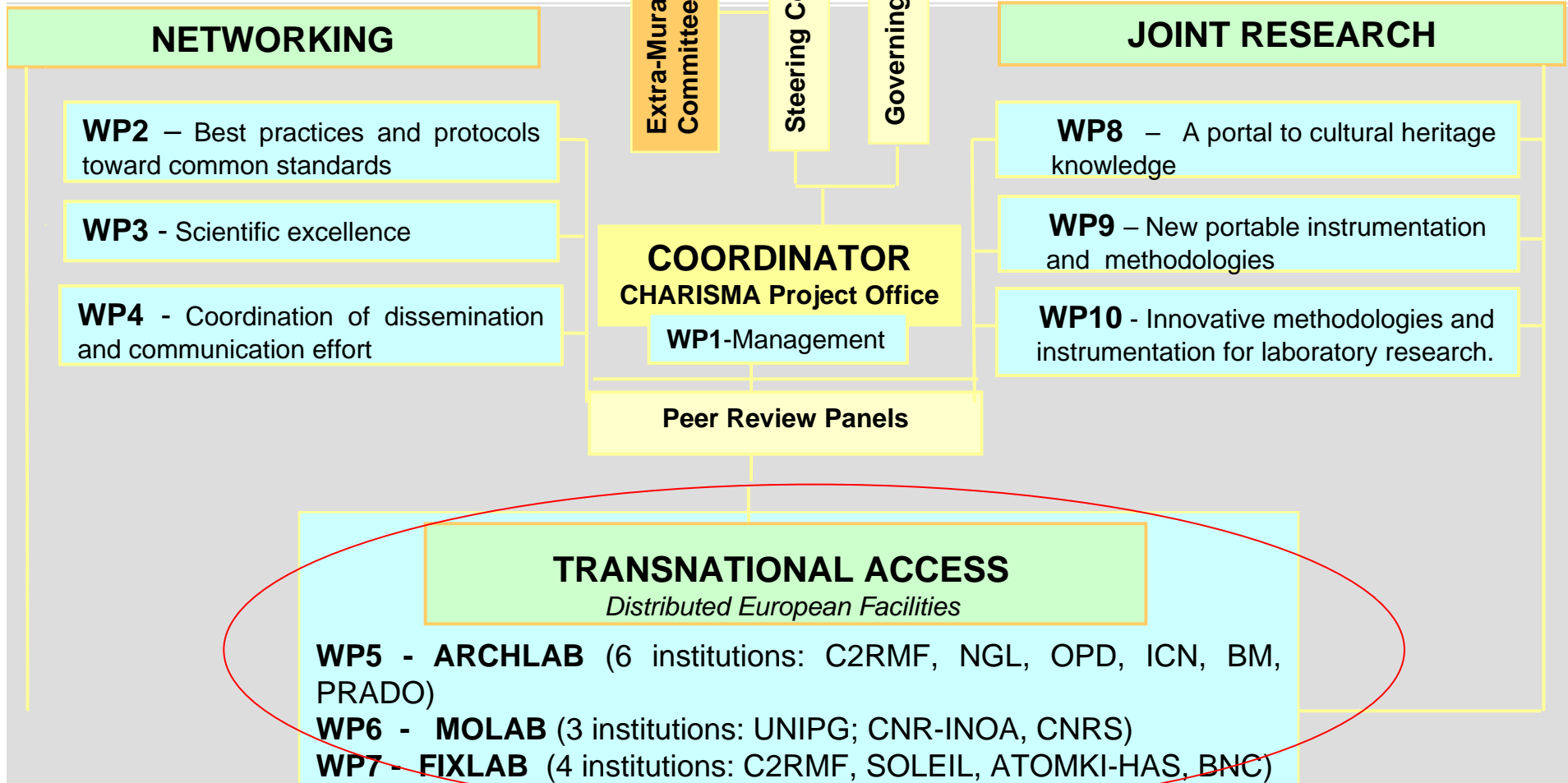
- Increasing the availability and use of best practises and results, through interaction with target users (young researchers, conservators, restorers) : organisation of workshops, courses

Coordination Activities



Charisma project

Structure



3 Transnational access programmes

- **ARCHLAB** (WP5)
with C2RMF, NGL, OPD, BM, PRADO, ICN
- **MOLAB** (WP6)
with UNIPG, CNR, CNRS-C2RMF
- **FIXLAB** (WP7)
with AGLAE, SOLEIL, ATOMKI, BNC



MOLAB, the mobile laboratory for *in situ* non-invasive measurements...

... allowing scientists, conservators and curators to carry out imaging and/or analytical measurements directly on the monuments, museum artworks and archaeological sites



FIXLAB, access to two platforms of European large and medium scale facilities

...allowing advanced measurements using synchrotron radiation, neutron sources and ion-beam facilities



- Platform A (France):
 - Synchrotron SOLEIL
 - CNRS Centre de Recherche et de Restauration de Musées de France



- Platform B (Hungary):
 - Budapest Neutron Centre
 - ATOMIKI HAS, Debrecen

ARCHLAB, the archives of European Museums and Cultural Heritage Institutions

- offering “physical” access to the Archives of European museums and Cultural Heritage Institutions
- almost no digital archives of analytical data open for the public at this moment
- way of making the analytical information, scientific records, sample and reference collections available to the broad public



ARCHLAB users:

- art-historians or archaeologists that want to exploit already acquired knowledge for their specific study
- curators and conservators-restorers that want to carry out a study preliminary to interventions....
- conservation scientists or historians that want to consult results of previous studies on pigments, colorants, binders ...;



ARCHLAB access to:

- Analytical data (spectra, graphics, analysis)
- Scientific reports
- Conservation reports
- Primary images
- Sample collection
- Reference collection
- Eventually also specific access to instrumentation and related expertise (during the visit)



How to apply for Transnational access to **ARCHLAB, FIXLAB and MOLAB**

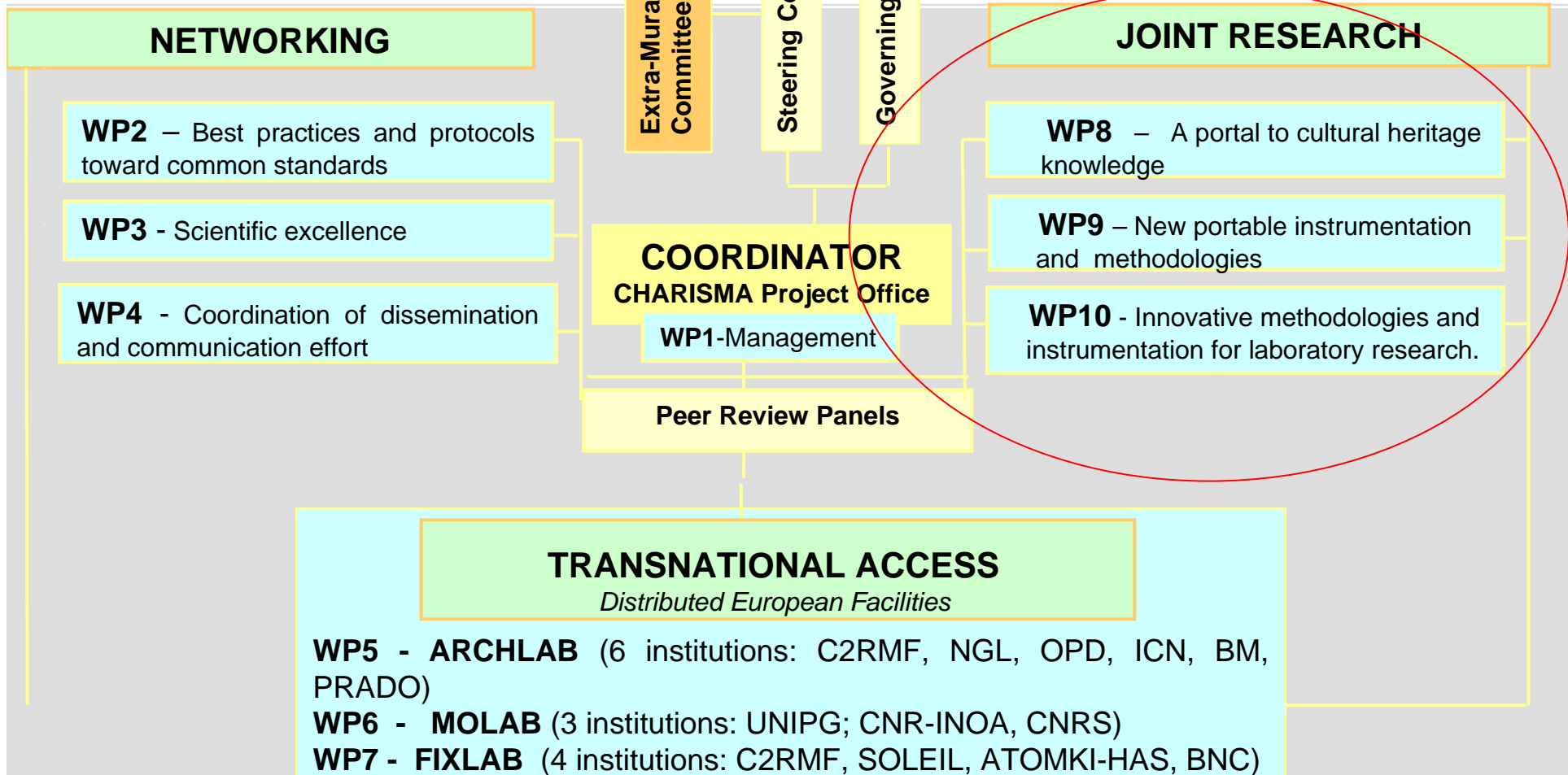
- Two calls / year
- See the welcome desks for the calls at the charisma website
 - Information about the current call, how to apply and information about the evaluation process and criteria
- Each proposal is evaluated by an international Peer Review Panel.





Charisma project

Structure



3 Joint research projects

1. Innovative methodologies and instrumentation for laboratory research (WP10)

organic material identification in micro-stratigraphies; organic colorants analysis; multispectral imaging and spectroscopy for the 2D and 3D distribution of organic substances

2. New portable instrumentation and methodologies for in-situ diagnostics and conservation (WP9)

Confocal IR Microscopy; Terahertz Spectroscopy and Imaging; Optical Coherence Tomography; Single Sided NMR Tomography; Surface Monitoring; Combined Wavelength and Time-Resolved Fluorimetry; Laser Cleaning Methodologies

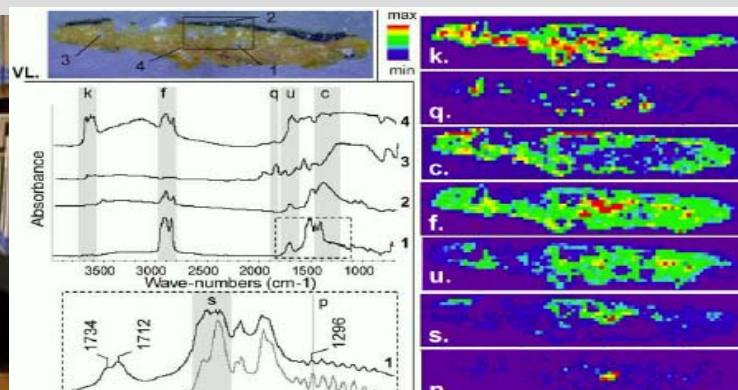
3. A portal to cultural heritage knowledge (WP 8)

A portal (WP8) exploiting cultural heritage knowledge

Joint research programme aiming to complement the **physical** access to the data from the Archives by the development of a *virtual access facility*.

...by means of a **Web Portal**, open for the CH community

A web interface will be developed during the CHARISMA project based on the integration of the metadata from different Archives



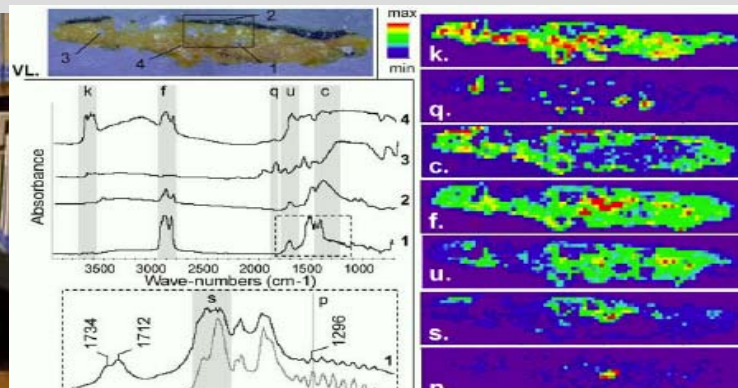
A portal (WP8) exploiting cultural heritage knowledge

Kind of data:

- analytical data (images, graphics, spectra...) / photographs / documents from various museums and cultural heritage institutions

Planning:

- after 2 YEARS: First prototype of the Portal will be available (link from the Charisma website)
- further upgrading will be done based on the feedback from the users





Charisma project

To conclude

By the opening of the Archives from CH institutions, “physically” and through the creation of a web PORTAL

By increasing the access to the use of lab advanced techniques, but also of portable equipment

CHARISMA is large infrastructure project aiming to enhance the excellence of European research in conservation and restoration

Through the dissemination of knowledge and expertise (workshops, conferences, trainings), the development of best practices and protocols...

Through the development and the diffusion of new applications and services for conservation..



Charisma project

By the opening of the Archives from CH institutions, “physically” and through the creation of a web PORTAL

Challenges for the future

How to archive all data in the best way for active use in future research and for exchange?

How to organise the data so that an external can independently search?

How to organise the access to it?



Acknowledgments to the European Commission through
Eu-ARTECH  and CHARISMA 



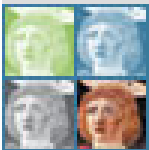
**“e-Infrastructures for Cultural Heritage”,
DC-Net Conference, Brussels, 29 October 2010**

Opening and Enhancing the Use of the Archives of European Cultural Heritage Institutions



Ina Vanden Berghe
KIK-IRPA, BE

<http://www.charismaproject.eu/>



CHARISMA

Cultural Heritage Advanced Research Infrastructures
Synergy for a Multidisciplinary Approach to Conservation/Restoration